

MALDIVES LAND AND SURVEY AUTHORITY

MINISTRY OF HOUSING AND INFRASTRUCTURE

Office (PABX): +(960) 3004300, Fax: +(960) 3004254

Ameenee Magu, Maafannu, Male', 20392, Maldives.

Email: survey@housing.gov.mv

Web: www. surveyofmaldives.gov.mv



CONTROL POINT DETAILS

Station Number **PSM0647**

Coordinate Information

Geodetic

Grid

WGS 84

UTM Zone 43

Lat: **5°32'52.72292"N**

E: **283226.181**

Long: **73°02'35.43709"E**

N: **613595.526**

Ellp Height: **-94.507**

Orth Height: **1.655**

Island Name: **R.Innamaadhoo (LD0564)**

Date: **18-Apr-24**

Monument description & method of survey:

- Concrete cast in-situ (cast on-site) with a diameter of 0.3m and 1.2m in length.
- A 1m long PVC pipe with a diameter of 0.3m was used as a casing for the concrete.
- A 1.5m long stainless steel (s/s) rod was driven into the ground as the central point, marked with a punch.
- The monument was labeled with a stainless steel plate stating the point identification.
- The monument was constructed above 0.16m of ground level.
- GNSS static survey was conducted for post-processing to determine the 3D coordinates of the monument.
- The vertical height related to mean sea level corrected using tide prediction data by GNSS static post processing.
- PSM0647 is visible to PSM0648 and PSM0649

General site condition & access:

- located at west side of the harbour on the road.
- near fuelshed.
- visible and easily accessible.

Owner: Innamaadhoo council



DOWN TOWARD PSM D: 1.5m



NORTH VIEW D: 2m



EAST VIEW D: 2m



FROM PSM UPTOWARD SKY



SOUTH VIEW D: 2m

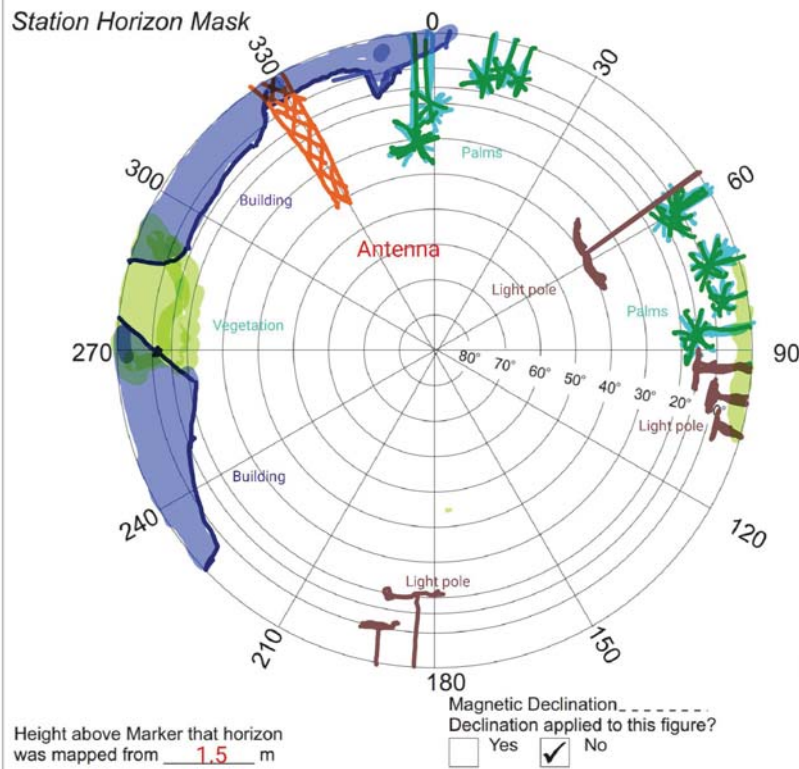


WEST VIEW D: 2m

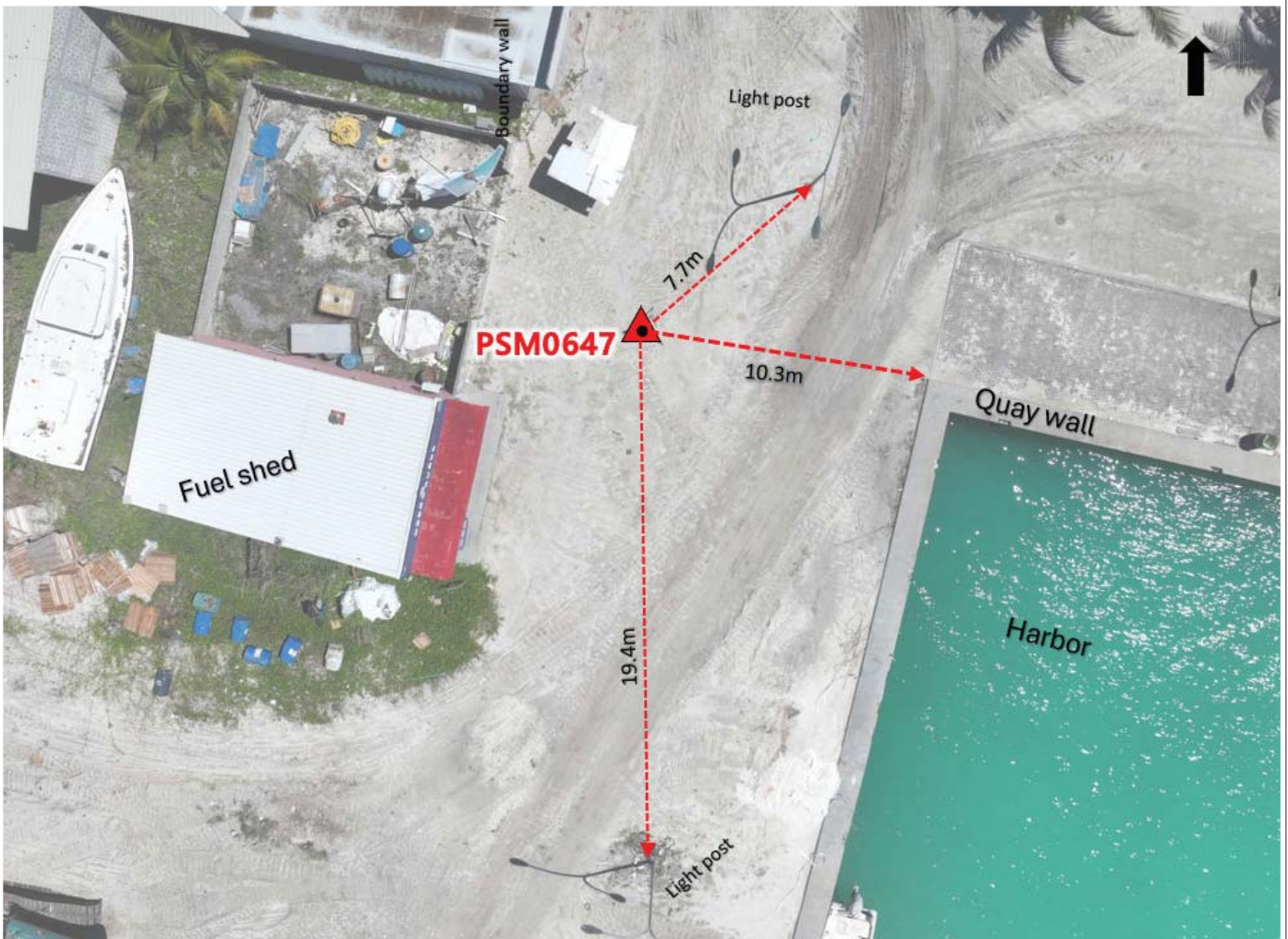
SITE INFORMATION

Station Number

P S M 0 6 4 7



Locality



Sketched by: saeed

Scale: Not to scale

Date: 18-Apr-24

Maldives Land and Survey Authority, MINISTRY OF HOUSING AND INFRASTRUCTURE, Ameenee Magu, Maafannu, Male', 20392, Maldives,
Office (PABX): +(960) 3004300, Fax: +(960) 3004254, Email: survey@housing.gov.mv, Web: www.surveyofmaldives.gov.mv

MALDIVES LAND AND SURVEY AUTHORITY

MINISTRY OF HOUSING AND INFRASTRUCTURE

Office (PABX): +(960) 3004300, Fax: +(960) 3004254

Ameenee Magu, Maafannu, Male', 20392, Maldives.

Email: survey@housing.gov.mv

Web: www. surveyofmaldives.gov.mv



CONTROL POINT DETAILS

Station Number **PSM0648**

Coordinate Information

Geodetic

Grid

WGS 84

UTM Zone 43

Lat: **5°32'49.93074"N**

E: **283411.373**

Long: **73°02'41.46223"E**

N: **613509.128**

Ellp Height: **-94.605**

Orth Height: **1.564**

Island Name: **R.Innamaadhoo (LD0564)**

Date: **18-Apr-24**

Monument description & method of survey:

- Concrete cast in-situ (cast on-site) with a diameter of 0.3m and 1.2m in length.
- A 1m long PVC pipe with a diameter of 0.3m was used as a casing for the concrete.
- A 1.5m long stainless steel (s/s) rod was driven into the ground as the central point, marked with a punch.
- The monument was labeled with a stainless steel plate stating the point identification.
- The monument was finished 0.15m above ground level.

- GNSS static survey was conducted for post-processing to determine the 3D coordinates of the monument.
- The vertical height elevation related MSL was transferred from PSM0647 by GNSS static post processing.
- PSM0647 is visible to PSM064

General site condition & access:

- located at east side of the harbour on the road just next to the ramp.
- easily accessible.

Owner: Innamaadhoo council



DOWN TOWARD PSM D: 1.5m



NORTH VIEW D: 2m



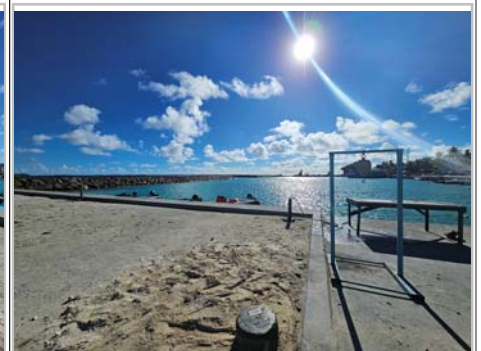
EAST VIEW D: 2m



FROM PSM UPTOWARD SKY



SOUTH VIEW D: 2m



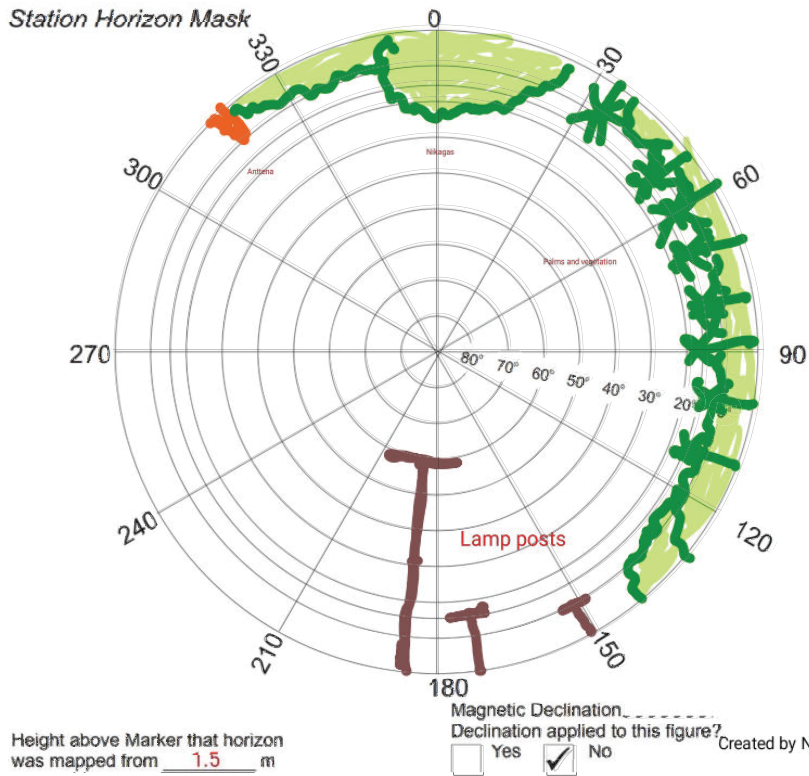
WEST VIEW D: 2m

SITE INFORMATION

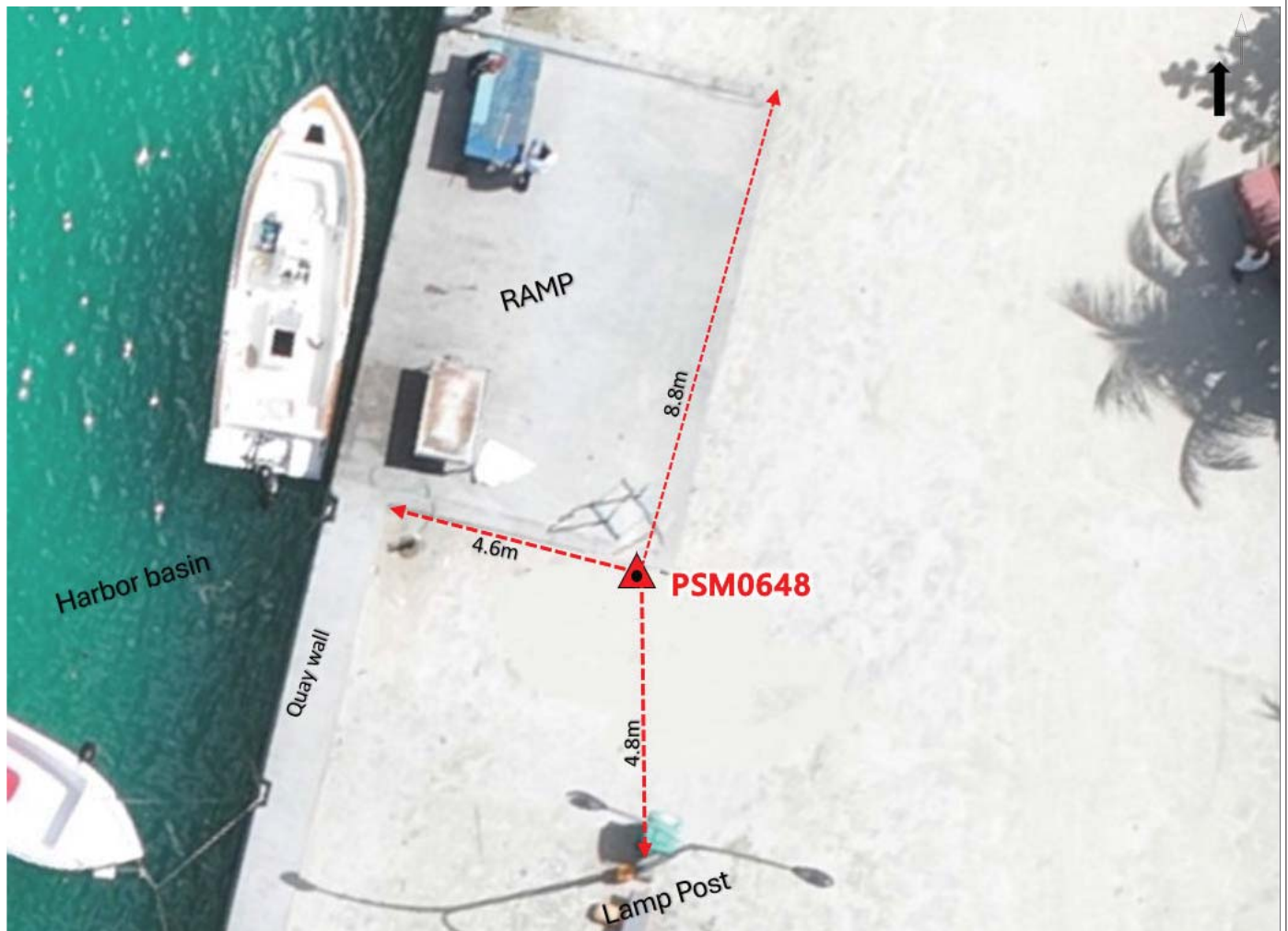
Station Number

P S M 0 6 4 8

Station Horizon Mask



Locality



Sketched by: saeed

Scale: Not to scale

Date: 18-Apr-24

MALDIVES LAND AND SURVEY AUTHORITY

MINISTRY OF HOUSING AND INFRASTRUCTURE

Office (PABX): +(960) 3004300, Fax: +(960) 3004254

Ameenee Magu, Maafannu, Male', 20392, Maldives.

Email: survey@housing.gov.mv

Web: www.surveyofmaldives.gov.mv



CONTROL POINT DETAILS

Station Number **PSM0649**

Coordinate Information

Geodetic

Grid

WGS 84

UTM Zone 43

Lat: **5°32'59.62538"N**

E: **283237.526**

Long: **73°02'35.78287"E**

N: **613807.558**

Ellp Height: **-95.251**

Orth Height: **0.912**

Island Name: **R.Innamaadhoo (LD0564)**

Date: **18-Apr-24**

Monument description & method of survey:

- Concrete cast in-situ (cast on-site) with a diameter of 0.3m and 1m in length.
- A 1m long PVC pipe with a diameter of 0.3m was used as a casing for the concrete.
- A 1.5m long stainless steel (s/s) rod was driven into the ground as the central point, marked with a punch.
- The monument was labeled with a stainless steel plate stating the point identification.
- The monument was finished 0.1m below ground level.

- GNSS static survey was conducted for post-processing to determine the 3D coordinates of the monument.
- The vertical elevation related MSL was transferred from PSM0647 by GNSS static post processing.
- PSM0647 is visible to PSM0649

General site condition & access:

- located near outdoor gym.
- easily accessible.

Owner: Innamaadhoo council



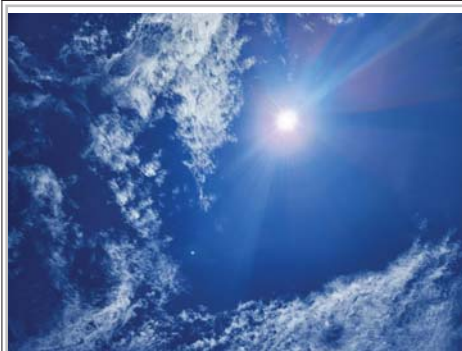
DOWN TOWARD PSM D: 1.5m



NORTH VIEW D: 2m



EAST VIEW D: 2m



FROM PSM UPTOWARD SKY



SOUTH VIEW D: 2m

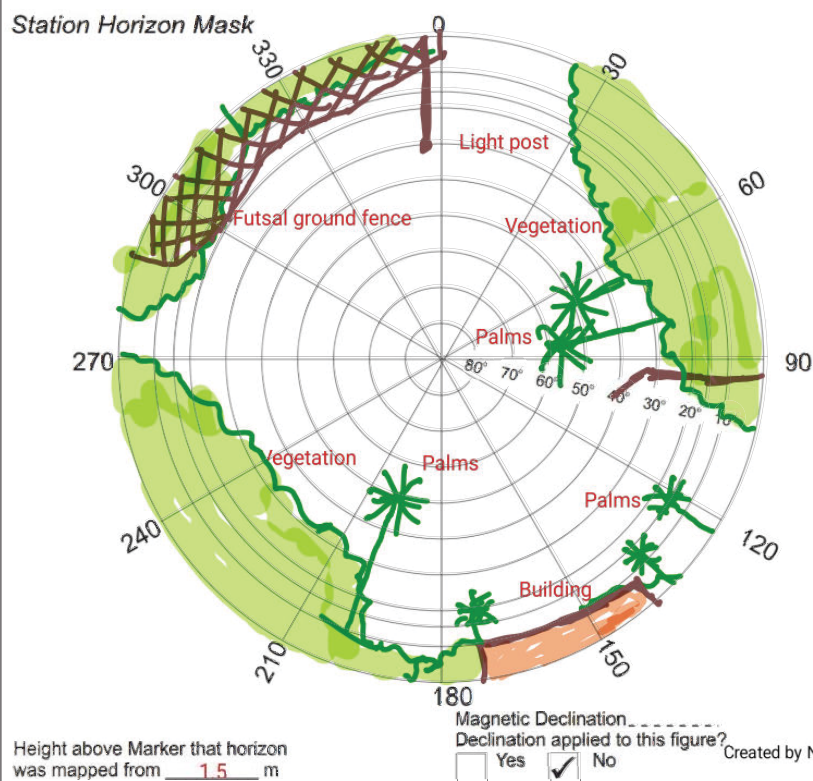


WEST VIEW D: 2m

SITE INFORMATION

Station Number

P	S	M	0	6	4	9
---	---	---	---	---	---	---



Locality



Sketched by: saeed

Scale: Not to scale

Date: 18-Apr-24

Maldives Land and Survey Authority, MINISTRY OF HOUSING AND INFRASTRUCTURE, Ameenee Magu, Maafannu, Male', 20392, Maldives,
Office (PABX): +(960) 3004300, Fax: +(960) 3004254, Email: survey@housing.gov.mv, Web: www.surveyofmaldives.gov.mv